

Snohomish United Red G02

Snohomish Youth SC

Snohomish, WA

G02 total strength=103

attack=0.1 defense=0.08

fall league = RCL G02 Div 4, Spr RCL G02 Div

alt names used:

SNOHOMISH UNITED GU02 RED (WA)

SNOHOMISH UNITED GU02 RED B (WA)

SNOHOMISH UNITED RED B

Venues played:

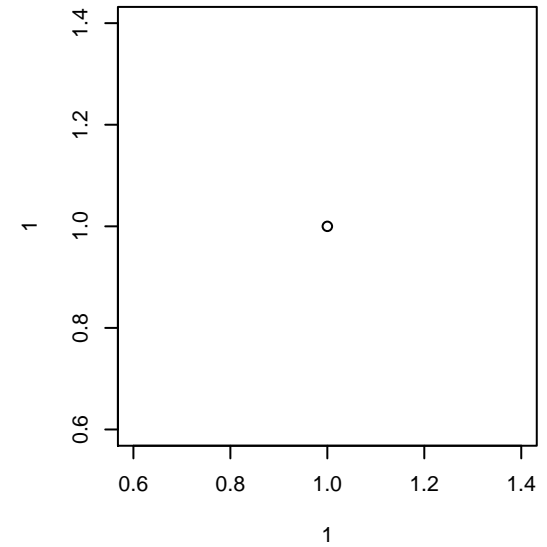
Snohomish United Invt Silver U11

Nike Crossfire Challenge Bronze 9v9 U11

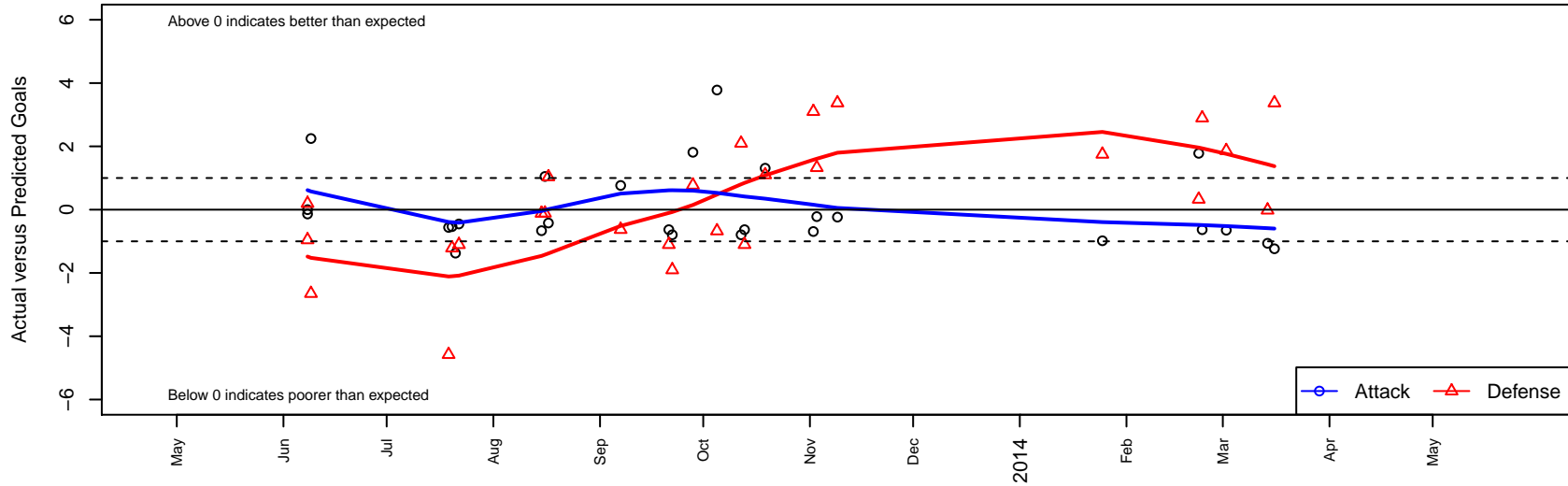
Bigfoot Silver U11

RCL G02 Div 4

Spr RCL G02 Div 4



Snohomish United Red G02
Dots are actual minus expected GF (blue circles) and GA (red triangles).
Blue line is smoothed change in attack strength. Red is smoothed change in defense strength.



	date	home		away		venue	pred.home	pred.away
3519	2014-03-16	Snohomish United Red G02	0	Harbor Premier Green G02	0	Spr RCL G02 Div 4	1.24	3.4e+00
3428	2014-03-14	FC Alliance B G02	3	Snohomish United Red G02	0	Spr RCL G02 Div 4	2.98	1.1e+00
3339	2014-03-02	Snohomish United Red G02	0	Seattle United Nova G02	1	Spr RCL G02 Div 4	0.65	2.9e+00
3251	2014-02-23	Three Rivers SC White G02	0	Snohomish United Red G02	0	Spr RCL G02 Div 4	2.90	6.3e-01
3232	2014-02-22	Highline Premier Red G02	2	Snohomish United Red G02	3	Spr RCL G02 Div 4	2.33	1.2e+00
3106	2014-01-25	Snohomish United Red G02	0	Eastside FC Blue G02	0	Spr RCL G02 Div 4	0.98	1.7e+00
2718	2013-11-09	Snohomish United Red G02	1	Harbor Premier Green G02	0	RCL G02 Div 4	1.24	3.4e+00
2634	2013-11-03	Highline Premier Red G02	1	Snohomish United Red G02	1	RCL G02 Div 4	2.33	1.2e+00
2591	2013-11-02	Blackhills FC Black G02	3	Snohomish United Red G02	0	RCL G02 Div 4	6.10	6.9e-01
2309	2013-10-19	Snohomish United Red G02	2	Blackhills FC Black G02	5	RCL G02 Div 4	0.69	6.1e+00
2198	2013-10-13	Snohomish United Red G02	0	Three Rivers SC White G02	4	RCL G02 Div 4	0.63	2.9e+00
2153	2013-10-12	PacNW White G02	3	Snohomish United Red G02	0	RCL G02 Div 4	5.10	7.9e-01
1962	2013-10-05	Snohomish United Red G02	5	Highline Premier Red G02	3	RCL G02 Div 4	1.22	2.3e+00
1785	2013-09-28	Eastside FC Grey G02	0	Snohomish United Red G02	4	RCL G02 Div 4	0.77	2.2e+00
1686	2013-09-22	Snohomish United Red G02	0	PacNW White G02	7	RCL G02 Div 4	0.79	5.1e+00
1638	2013-09-21	Three Rivers SC White G02	4	Snohomish United Red G02	0	RCL G02 Div 4	2.90	6.3e-01
1307	2013-09-07	Harbor Premier Green G02	4	Snohomish United Red G02	2	RCL G02 Div 4	3.37	1.2e+00
921	2013-08-17	Seattle United Copa G04	3	Snohomish United Red G02	1	Bigfoot Silver U11	4.04	1.4e+00
879	2013-08-16	Snohomish United Red G02	2	Seattle United Shoreline Blue G02	3	Bigfoot Silver U11	0.95	2.9e+00
866	2013-08-15	Snohomish United Red G02	1	WPFC Fury Black G02	2	Bigfoot Silver U11	1.66	1.9e+00
507	2013-07-22	Snohomish United Red G02	1	RV Slammers White G02	3	Nike Crossfire Challenge Bronze 9v9 U11	1.45	1.9e+00
487	2013-07-21	SSC Shadow Wambach G02	10	Snohomish United Red G02	0	Nike Crossfire Challenge Bronze 9v9 U11	2.93	1.4e+00
433	2013-07-20	WPFC White G02	5	Snohomish United Red G02	0	Nike Crossfire Challenge Bronze 9v9 U11	3.79	5.4e-01
382	2013-07-19	RV Slammers Orange G02	9	Snohomish United Red G02	0	Nike Crossfire Challenge Bronze 9v9 U11	4.42	5.6e-01
84	2013-06-09	Crossfire Premier C G02	7	Snohomish United Red G02	3	Snohomish United Invit Silver U11	4.35	7.5e-01
62	2013-06-08	NWN Red G03	6	Snohomish United Red G02	0	Snohomish United Invit Silver U11	6.20	9.0e-06
64	2013-06-08	NWN Blue G03	4	Snohomish United Red G02	1	Snohomish United Invit Silver U11	3.05	1.1e+00